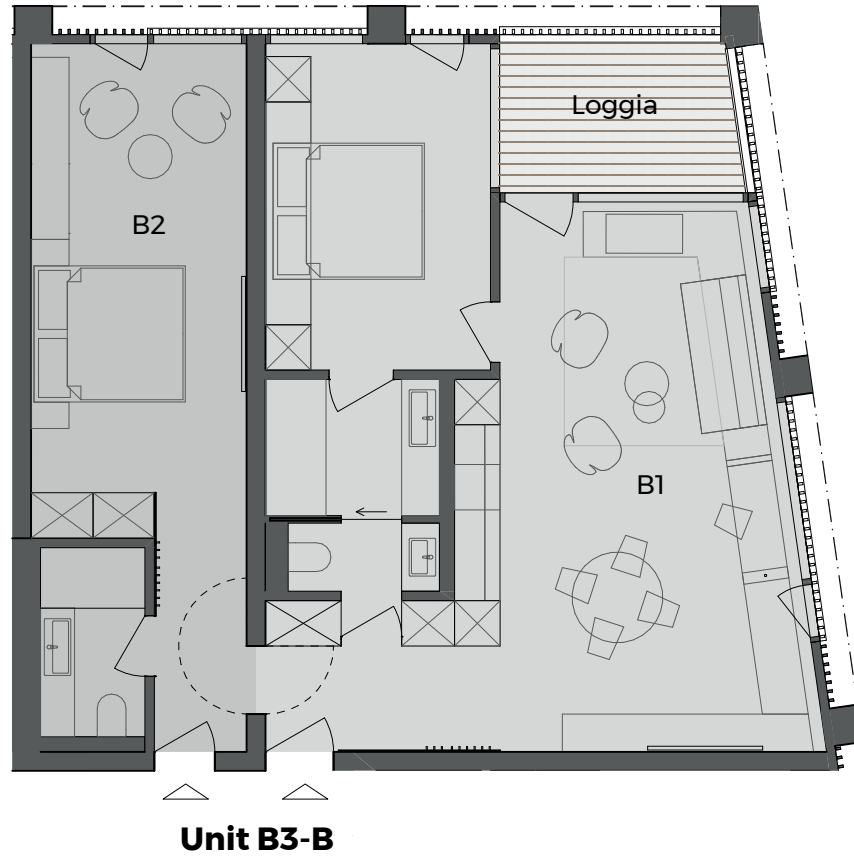


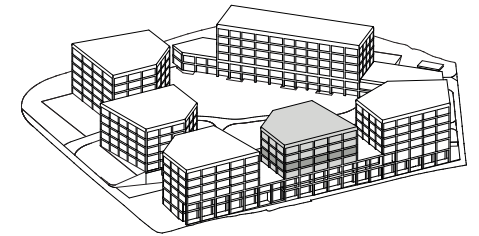
**B3-B | Haus B | Level 3 | Unit B**  
**| 3 ½ Zimmer-Wohnung**

B1	2 ½ Zimmer	59.60 m <sup>2</sup>
Loggia	6.25 m <sup>2</sup> x 0.5	3.15 m <sup>2</sup>
B2	1 Zimmer	28.50 m <sup>2</sup>

**Unit B3-B** **91.25 m<sup>2</sup>**



Haus B



Level 3

